

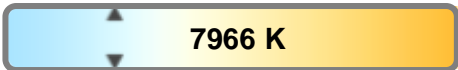
Light efficiency:



Light quality:



Color temperature:



Output: 1343 lm  
Peak: 23526 cd  
Power: 39.4 W  
PF: 0.96



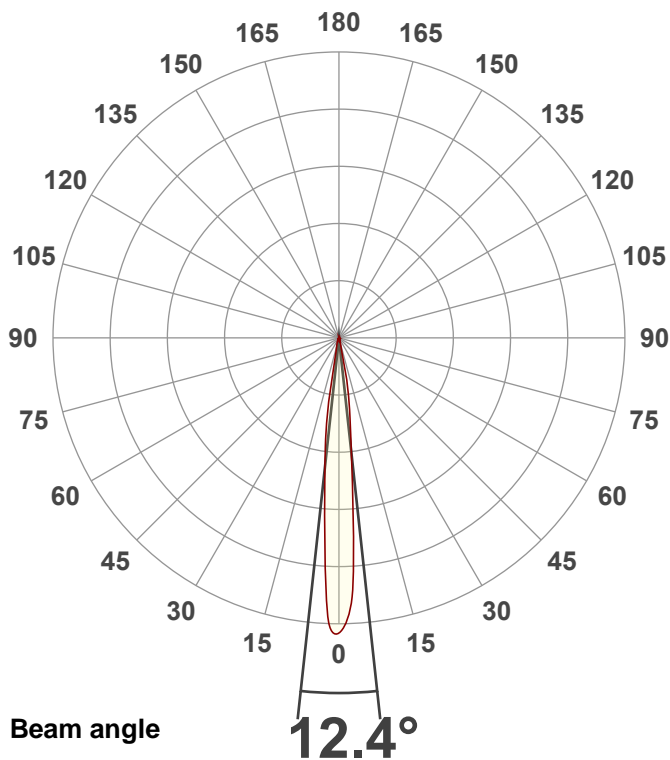
Tracking number: [n/a](#)

Product name:  
**ElectraPix Par 7**

Item number:  
**8000K**

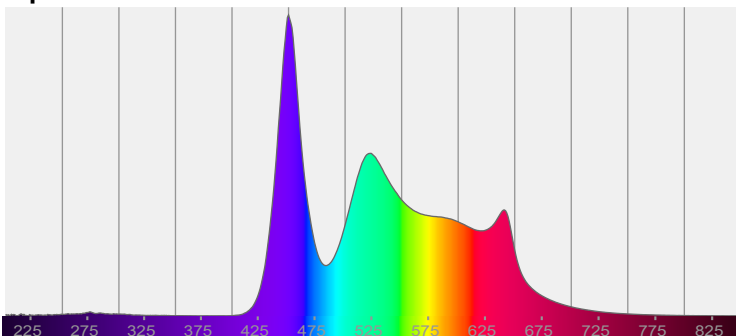
Date and time:  
**9/9/2024 12:07:45 PM**

Description:  
**@ 171**

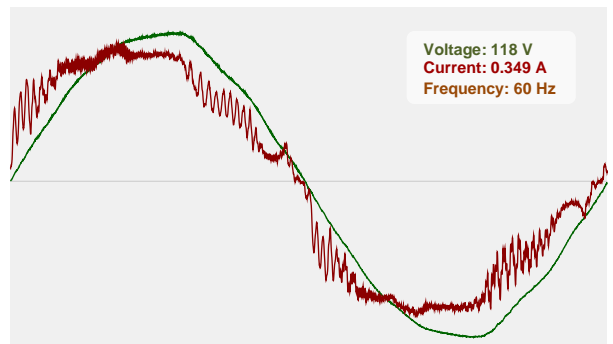


CIE 1931  
x: 0.293  
y: 0.314

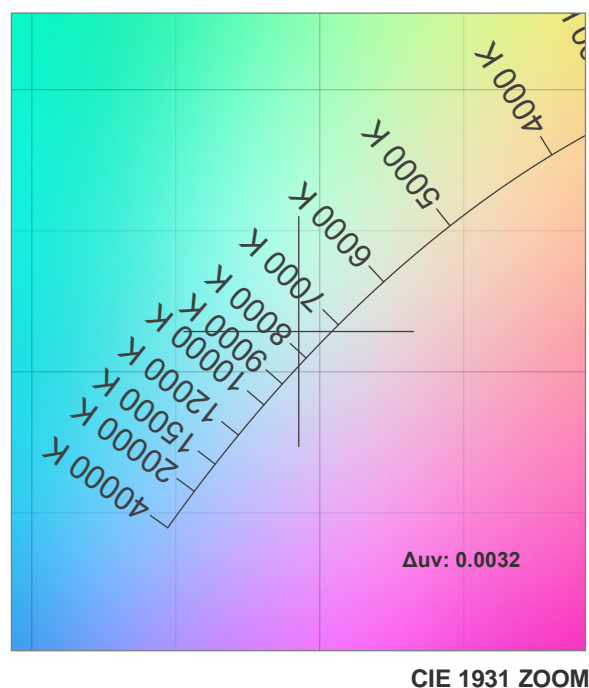
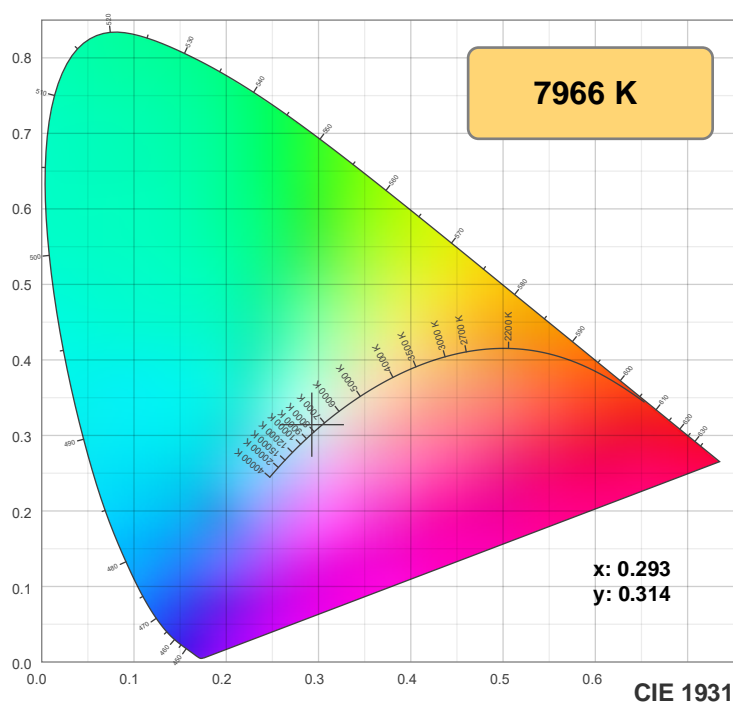
Spectra



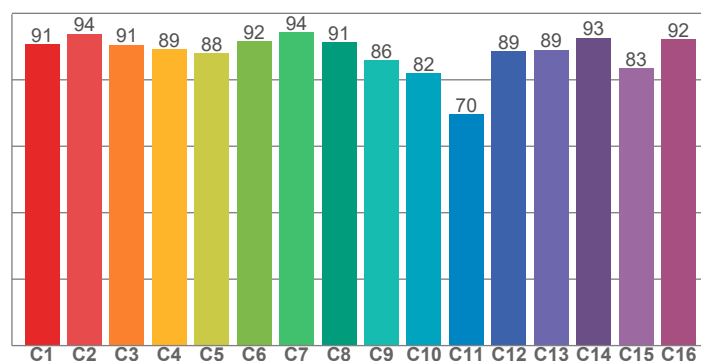
Power



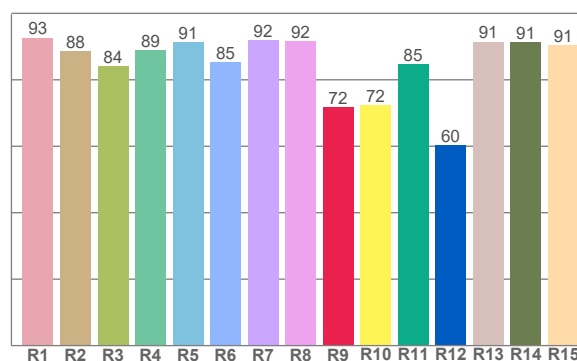
## Color details



**TM-30: 88.2**



**CRI: 89.3 (R1-R8)**



**CRI R values, only R1-R8 are used to calculate final CRI value**

R1	R2	R3	R4	R5	R6	R7	R8	R9	R10	R11	R12	R13	R14	R15
92.7	88.5	84.0	88.8	91.3	85.3	91.9	91.7	71.7	72.5	84.7	60.4	91.5	91.2	90.5

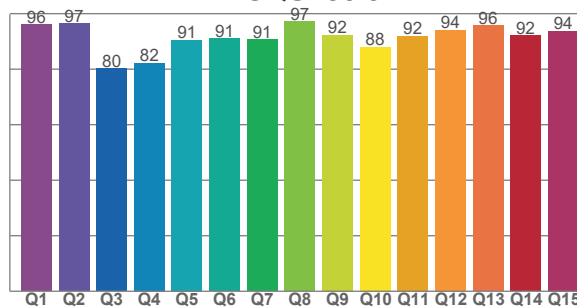
**TM30 C values, 16 binned values out of total of 99 C values**

C1	C2	C3	C4	C5	C6	C7	C8	C9	C10	C11	C12	C13	C14	C15	C16
90.6	93.9	90.6	89.1	88.0	91.6	94.2	91.2	85.9	81.9	69.6	88.6	89.0	92.6	83.4	92.2

**CQS Q values**

Q1	Q2	Q3	Q4	Q5	Q6	Q7	Q8	Q9	Q10	Q11	Q12	Q13	Q14	Q15
96.1	96.5	80.2	82.3	90.6	91.1	90.7	97.2	92.4	88.0	91.9	94.2	95.7	92.2	93.8

**CQS: 90.3**



### Color parameters

Color temperature	Color rendering index	Red component	Color fidelity	Color gamut	Color quality scale	Color coordinate cie 1931	Color coordinate cie 1931	Color coordinate	Color coordinate	Color deviation from black body
CCT	CRI	CRI R9	TM30 Rf	TM30 Rg	CQS	x	y	u	v	Δuv
7966 K	89.3	71.7	88.2	100.7	90.3	0.293	0.314	0.189	0.305	0.0032

# TM-30 details

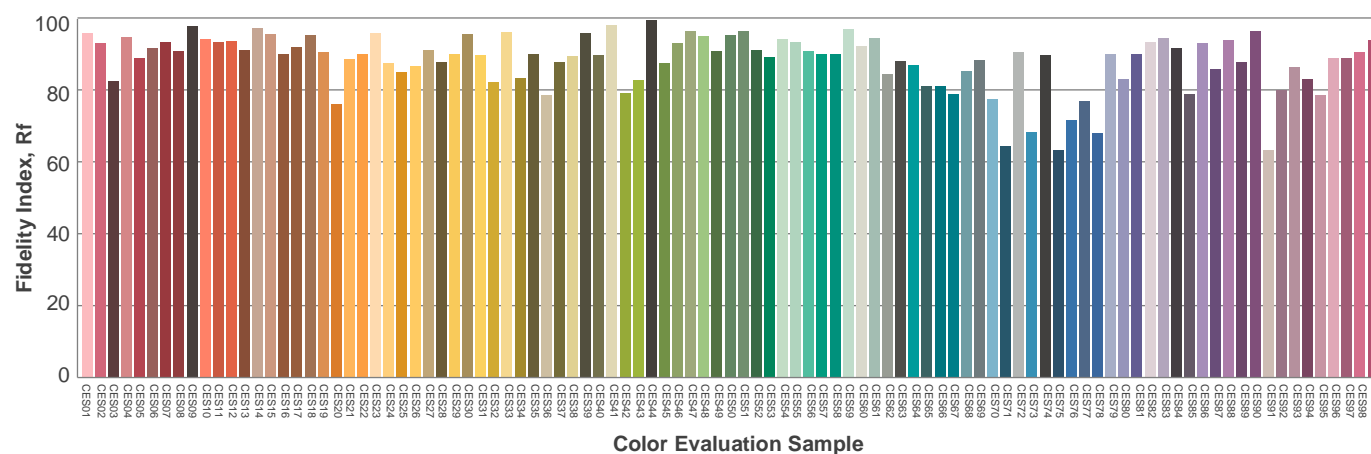
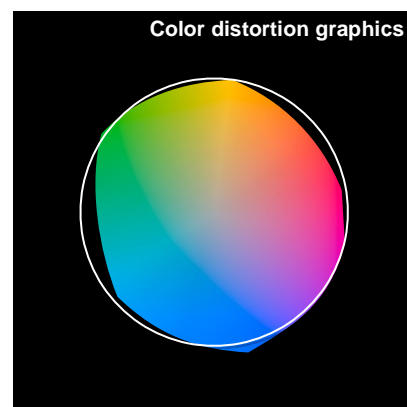
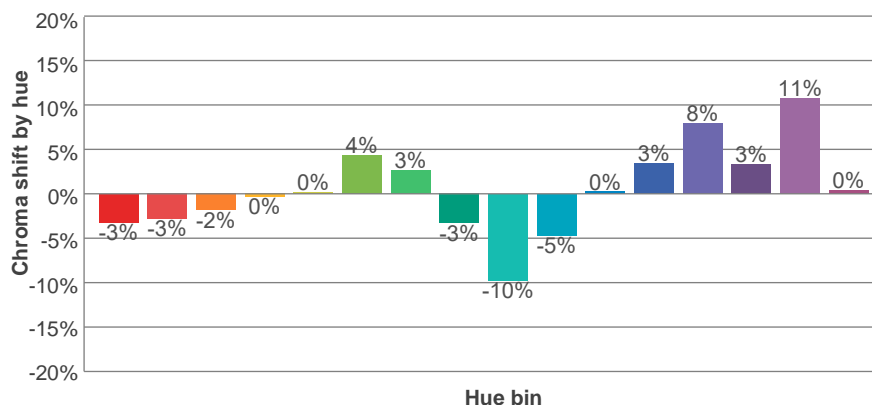
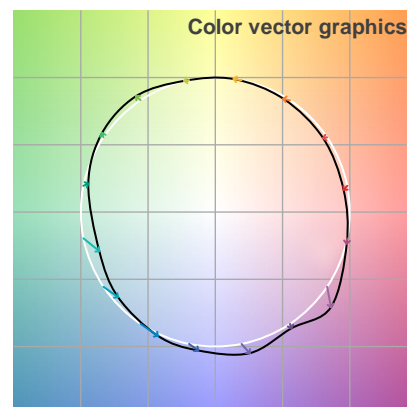
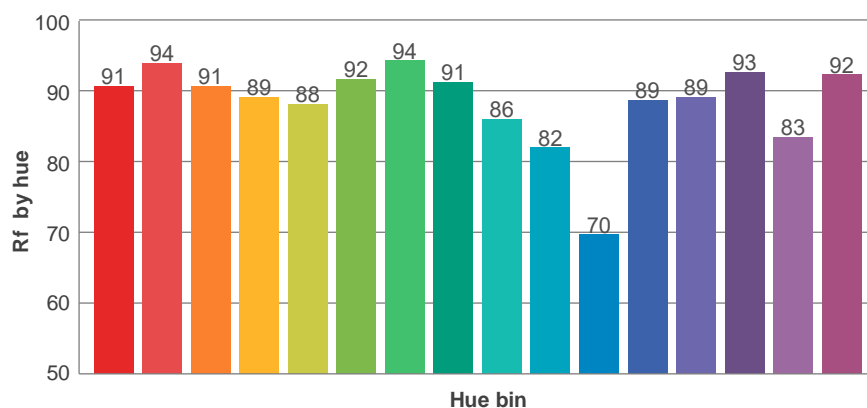
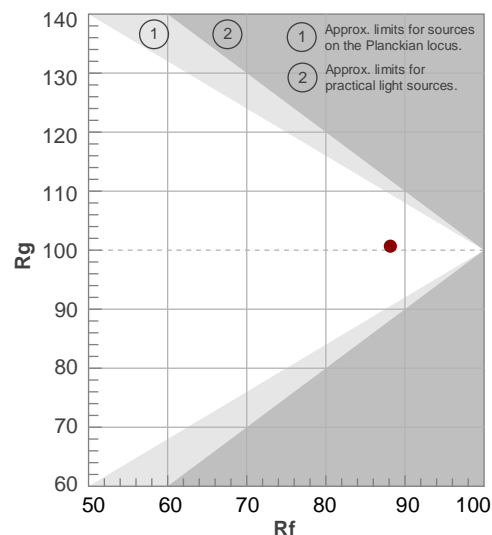
**Rf 88.2**

Fidelity index Rf

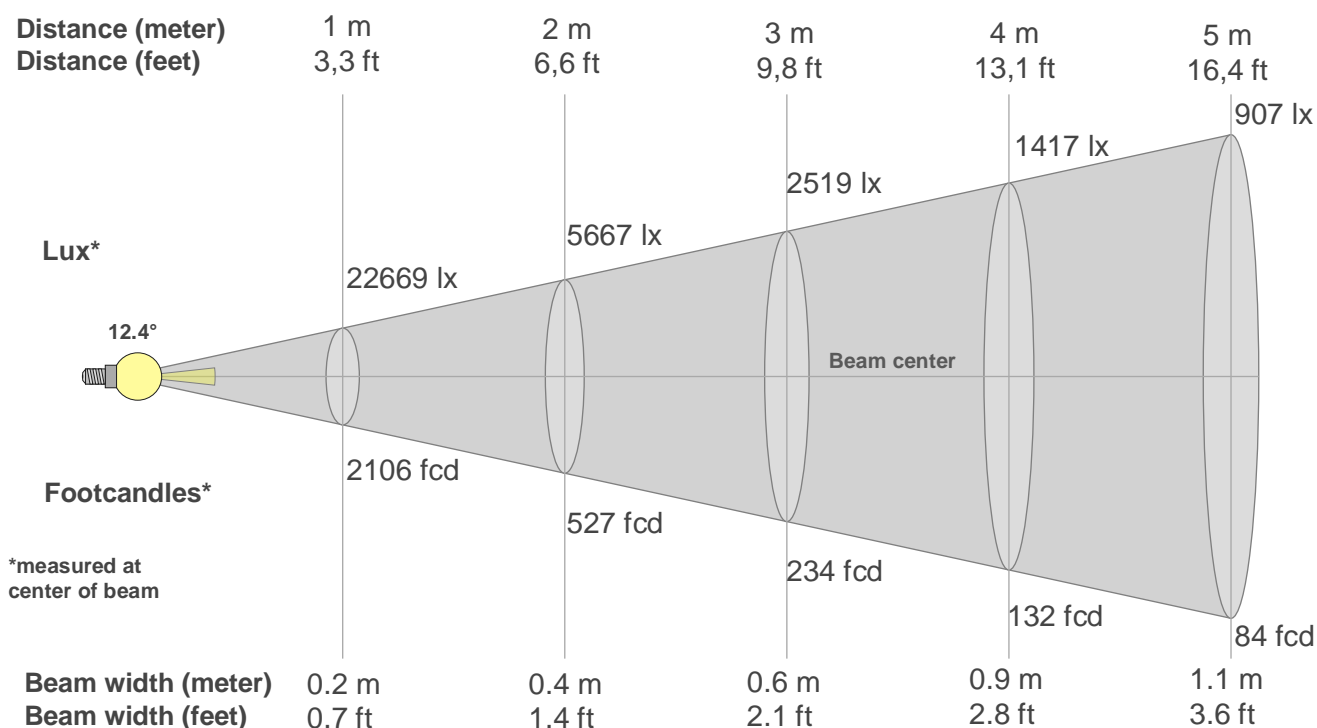
**Rg 100.7**

Gamut index Rg

Hue Bin	R <sub>f</sub>	Shifts (%)	
		Chroma	Hue
1	91	-3%	-2%
2	94	-3%	1%
3	91	-2%	5%
4	89	0%	6%
5	88	0%	4%
6	92	4%	1%
7	94	3%	-2%
8	91	-3%	-2%
9	86	-10%	12%
10	82	-5%	12%
11	70	0%	16%
12	89	3%	8%
13	89	8%	5%
14	93	3%	-1%
15	83	11%	-11%
16	92	0%	-4%



## Beam details



### Beam intensities from 1-20m

1m	2m	3m	4m	5m	6m	7m	8m	9m	10m	11m	12m	13m	14m	15m	16m	17m	18m	19m	20m
3.3ft	6.6ft	9.8ft	13.1ft	16.4ft	19.7ft	23ft	26.2ft	29.5ft	32.8ft	36.1ft	39.4ft	42.7ft	45.9ft	49.2ft	52.5ft	55.8ft	59.1ft	62.3ft	65.6ft
22669lx	5667lx	2519lx	1417lx	907lx	630lx	463lx	354lx	280lx	227lx	187lx	157lx	134lx	116lx	101lx	89lx	78lx	70lx	63lx	57lx
2106.1fcd	526.5fcd	234fcd	131.6fcd	84.2fcd	58.5fcd	43fcd	32.9fcd	26fcd	21.1fcd	17.4fcd	14.6fcd	12.5fcd	10.7fcd	9.4fcd	8.2fcd	7.3fcd	6.5fcd	5.8fcd	5.3fcd

### Intensities in 0° c-plane

0°	1°	2°	3°	4°	5°	6°	7°	8°	9°	10°	11°	12°	13°	14°	15°	16°	17°	18°	19°
22.7K	22.3K	21.9K	21.2K	18.2K	15.3K	12.3K	9.3K	6.5K	5.3K	4.2K	3.0K	1.8K	0.7K	0.6K	0.5K	0.4K	0.3K	0.2K	0.2K
100%	98%	96%	94%	80%	67%	54%	41%	29%	24%	18%	13%	8%	3%	3%	2%	2%	1%	1%	1%

### Intensities in 90° c-plane

0°	1°	2°	3°	4°	5°	6°	7°	8°	9°	10°	11°	12°	13°	14°	15°	16°	17°	18°	19°
22.7K	22.3K	21.9K	21.2K	18.2K	15.3K	12.3K	9.3K	6.5K	5.3K	4.2K	3.0K	1.8K	0.7K	0.6K	0.5K	0.4K	0.3K	0.2K	0.2K
100%	98%	96%	94%	80%	67%	54%	41%	29%	24%	18%	13%	8%	3%	3%	2%	2%	1%	1%	1%

### Intensities in 180° c-plane

0°	1°	2°	3°	4°	5°	6°	7°	8°	9°	10°	11°	12°	13°	14°	15°	16°	17°	18°	19°
22.7K	23.1K	23.5K	20.9K	18.0K	15.2K	12.3K	9.4K	7.7K	6.1K	4.5K	2.9K	1.3K	1.0K	0.8K	0.6K	0.5K	0.3K	0.2K	0.2K
100%	102%	104%	92%	80%	67%	54%	41%	34%	27%	20%	13%	6%	4%	4%	3%	2%	1%	1%	1%

### Intensities in 270° c-plane

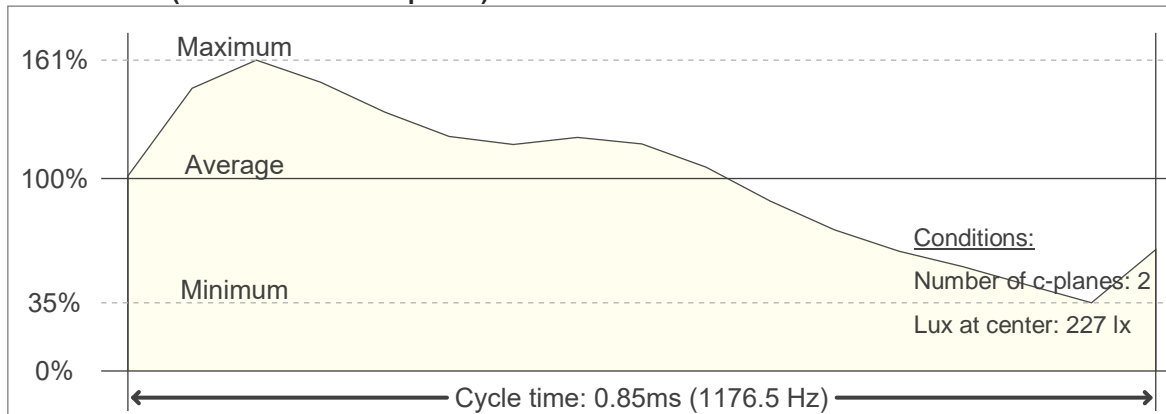
0°	1°	2°	3°	4°	5°	6°	7°	8°	9°	10°	11°	12°	13°	14°	15°	16°	17°	18°	19°
22.7K	23.1K	23.5K	20.9K	18.0K	15.2K	12.3K	9.4K	7.7K	6.1K	4.5K	2.9K	1.3K	1.0K	0.8K	0.6K	0.5K	0.3K	0.2K	0.2K
100%	102%	104%	92%	80%	67%	54%	41%	34%	27%	20%	13%	6%	4%	4%	3%	2%	1%	1%	1%

Beam angle 50%	Field angle 10%	Cutoff angle 2,5%	Intensity ratio in 120° cone	Intensity ratio in 90° cone
12.4°	22.9°	29.4°	99.7%	97.9%

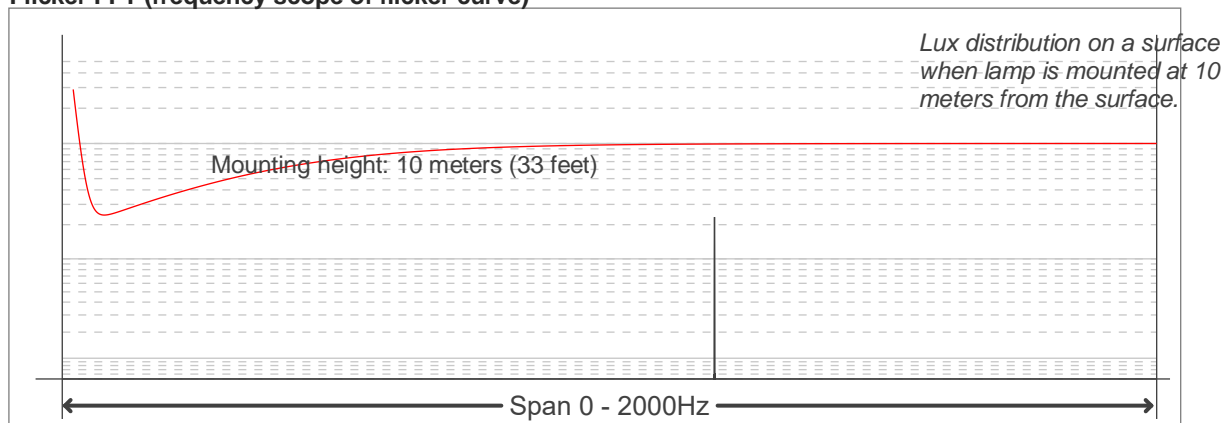
## Flicker

### Flicker curve (complete sampled flicker signal)

### Flicker frame (frame of one flicker period)



### Flicker FFT (frequency scope of flicker curve)



### Flicker results:

Flicker frequency:		1176.47 Hz	
Flicker index:	0.16	JA8/10 40Hz	0.07 %
Flicker percentage:	71.29 %	JA8/10 90Hz	0.08 %
SVM: (Visual flicker)	0.47	JA8/10 200Hz	0.17 %
PstLM	0.04	JA8/10 400Hz	0.53 %
Mp	0.02	JA8/10 1000Hz	5.43 %

### Flicker conditions:

Sample rate:	20000 samples/second
--------------	----------------------